

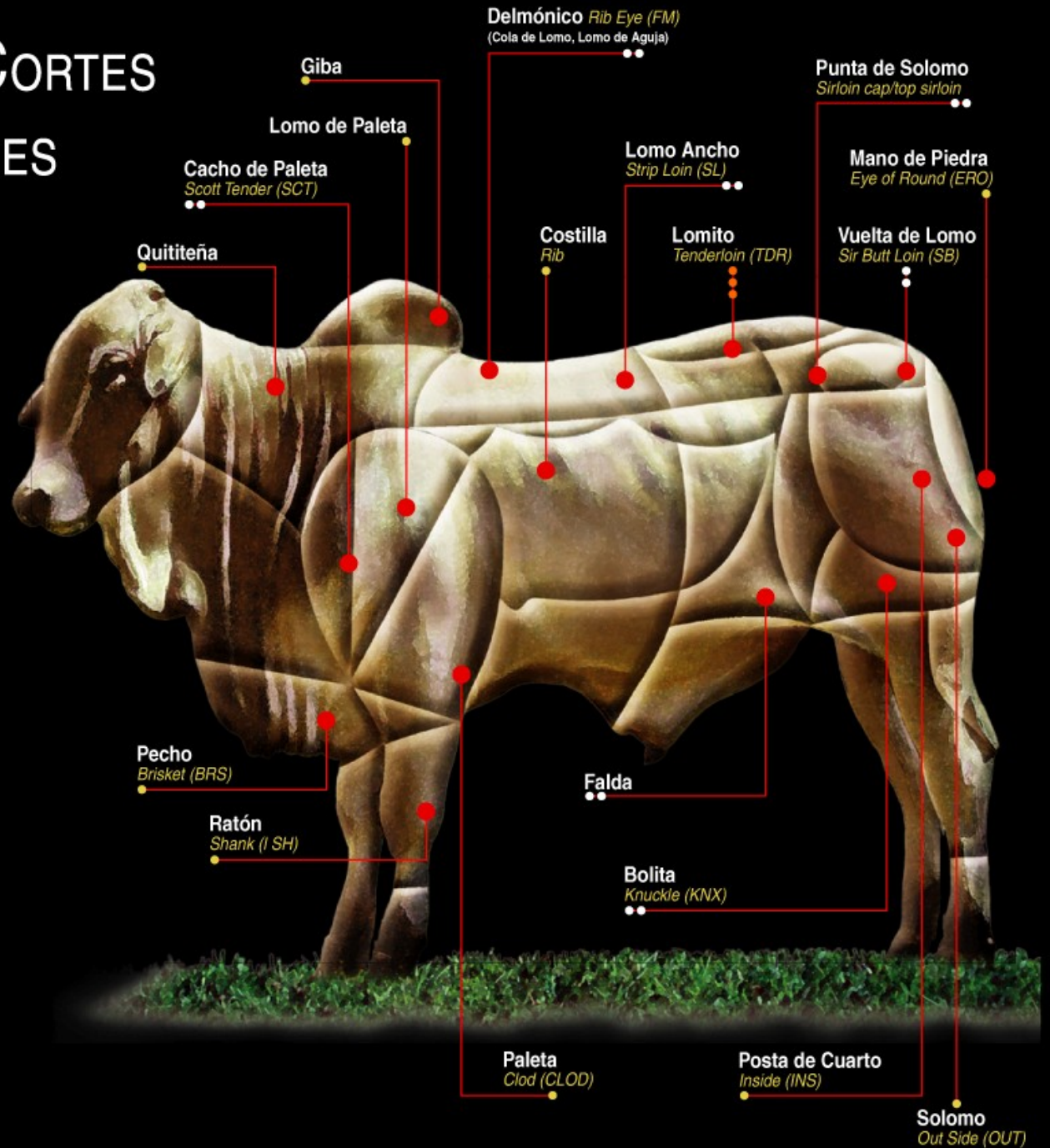
Conozca de Cortes de res



CORFOGA Corporación Ganadera

Carne..te hace bien!

CLASIFICACIÓN DE CORTES DE CARNE DE RES

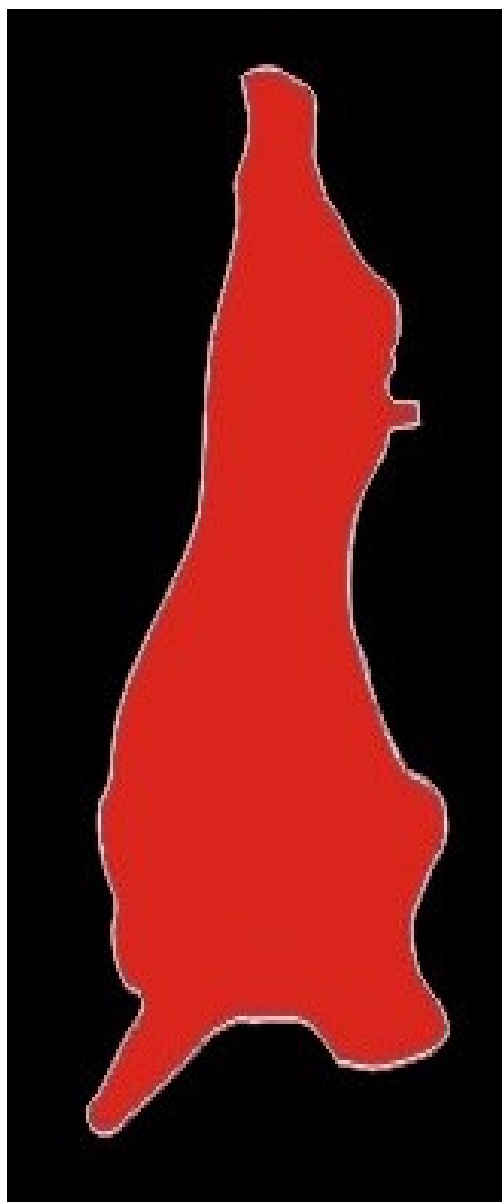


Nomenclatura:

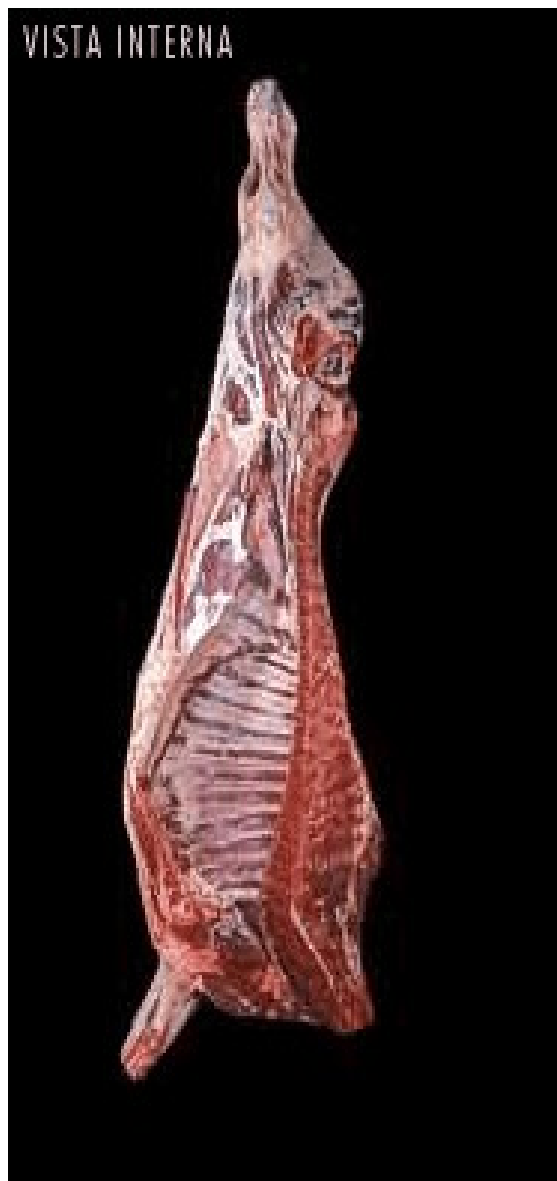


muy suave
suave
menos suave

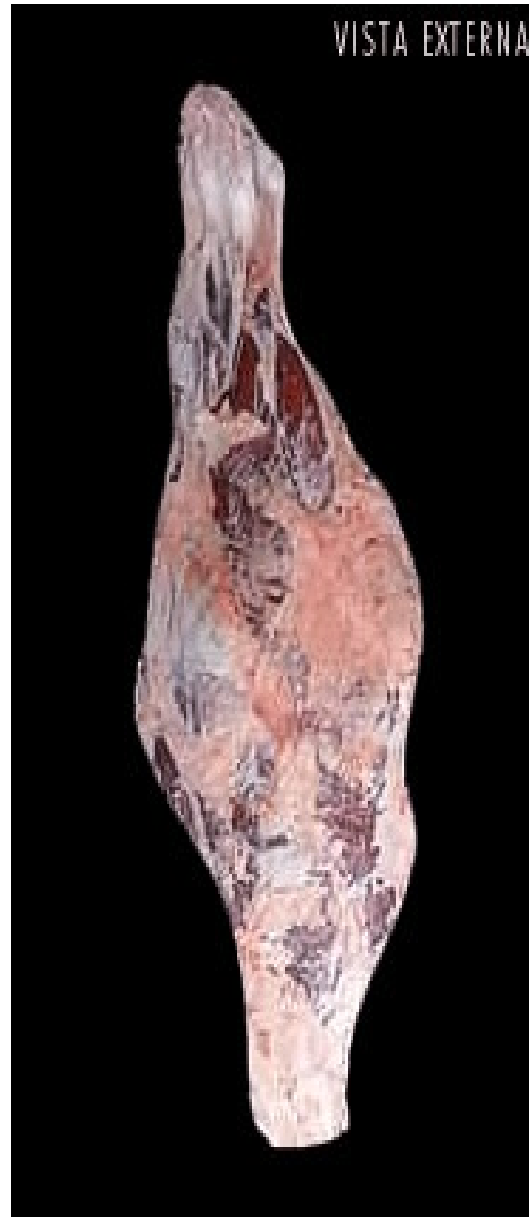
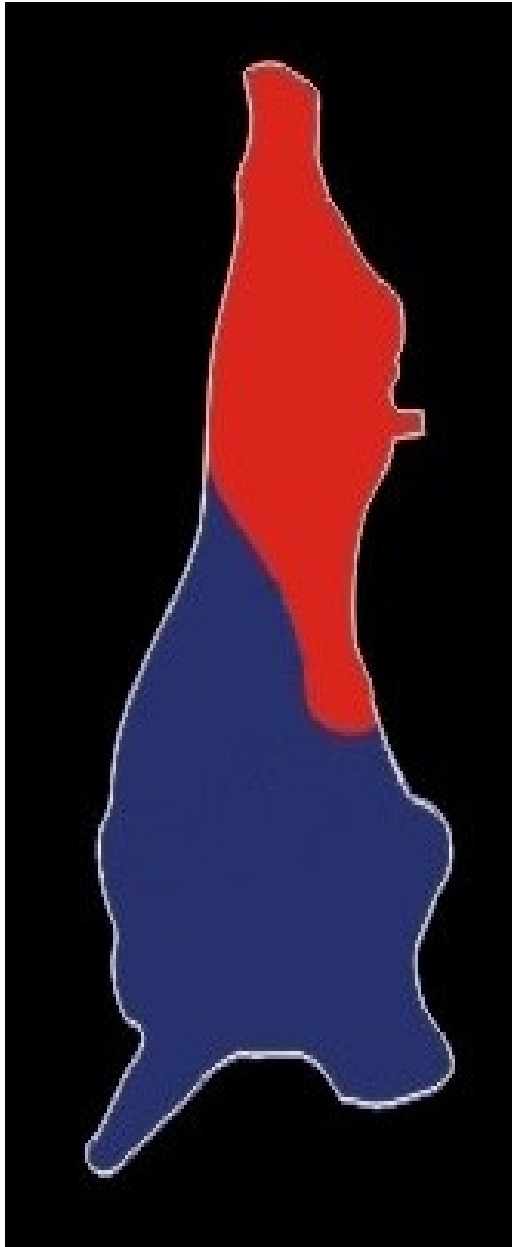




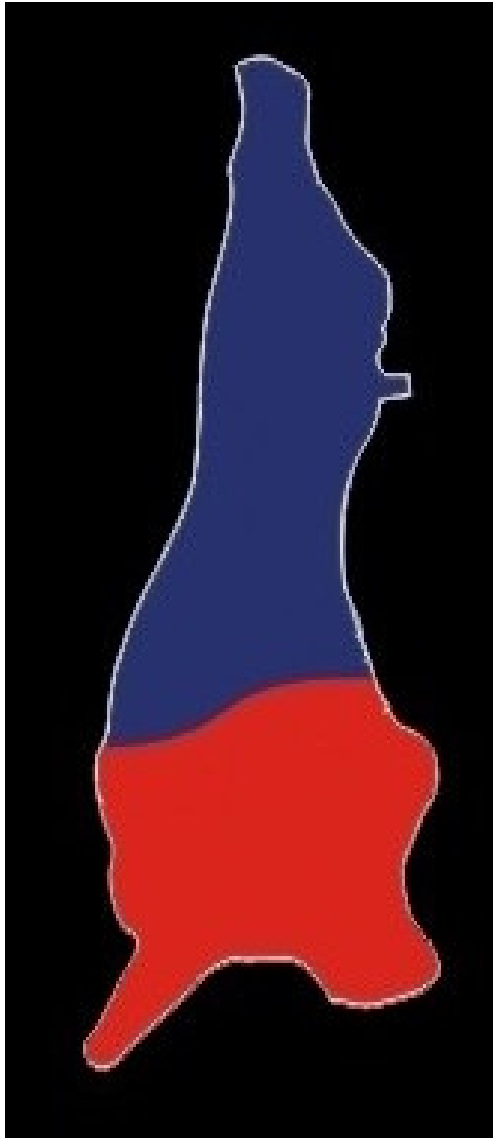
VISTA INTERNA



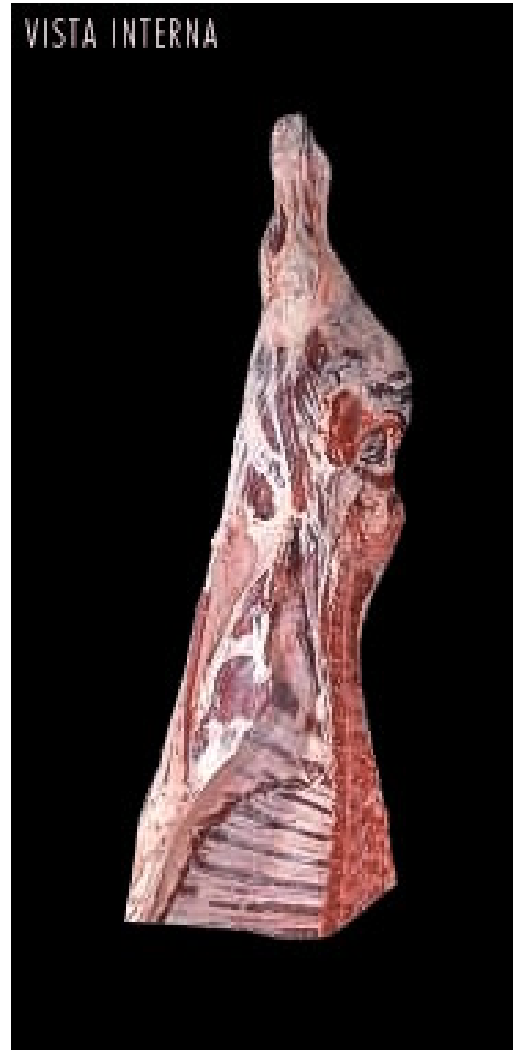
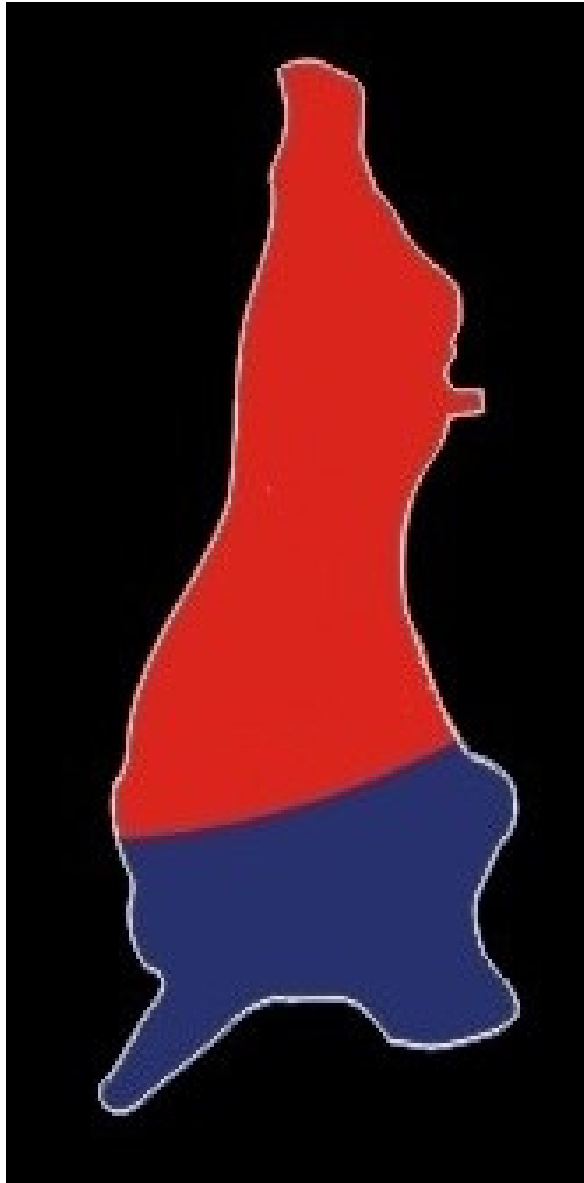
1/2 CANAL
Sin médula



PISTOLA

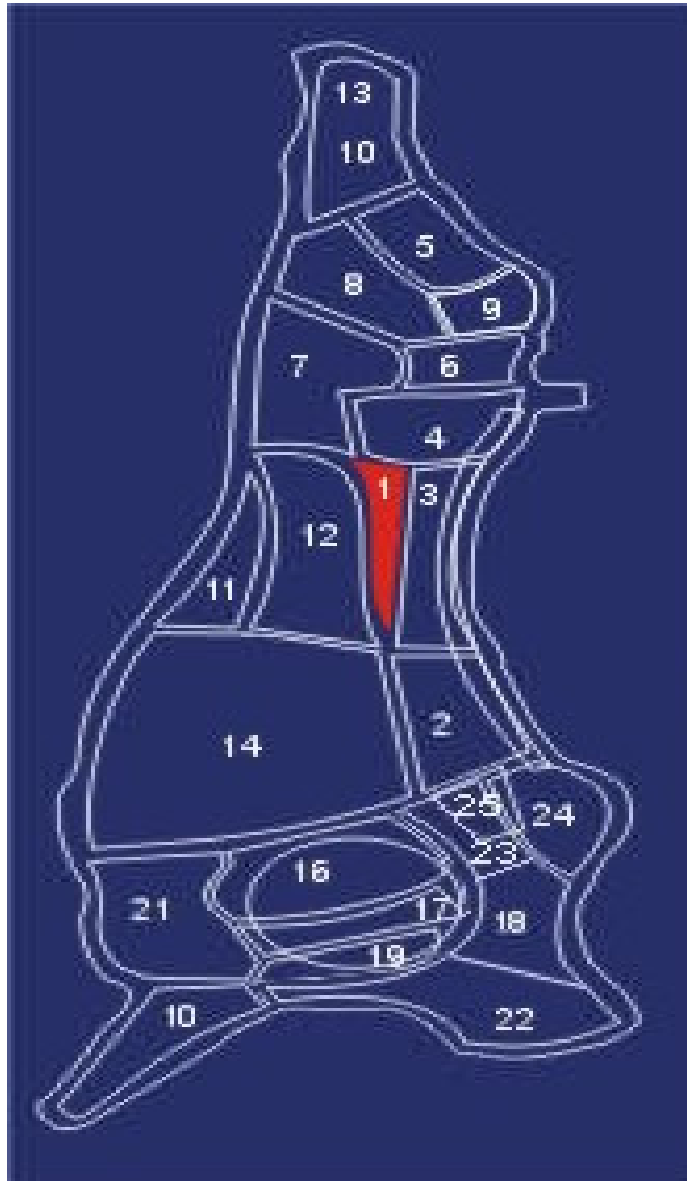


CUARTO
DELANTERO
7 COSTILLA



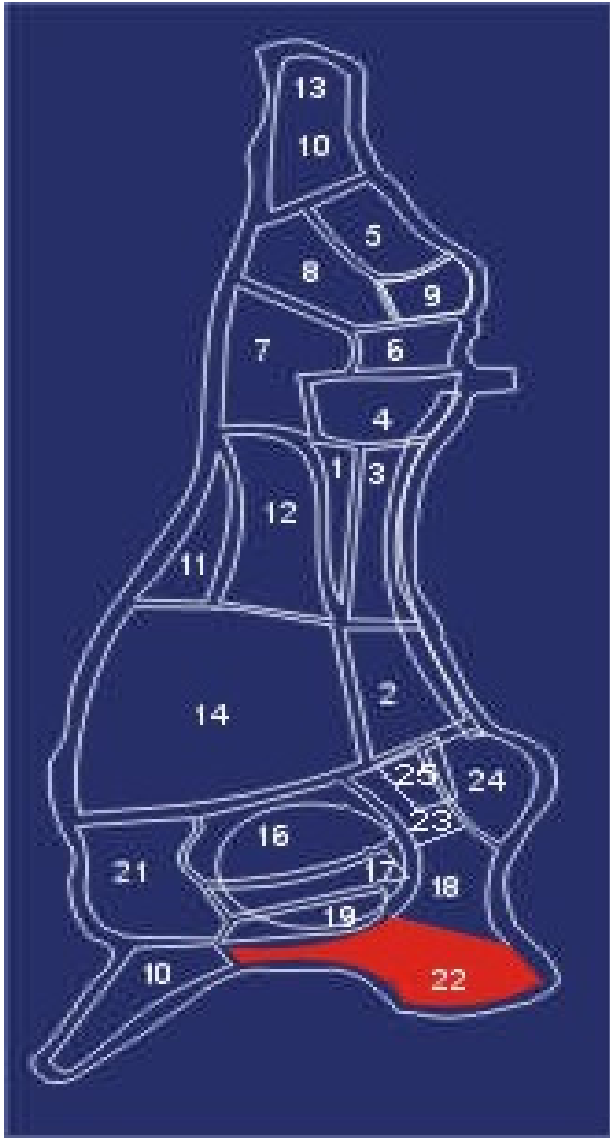
CUARTO
TRASERO
COMPLETO

CORTES DERES



Lomito



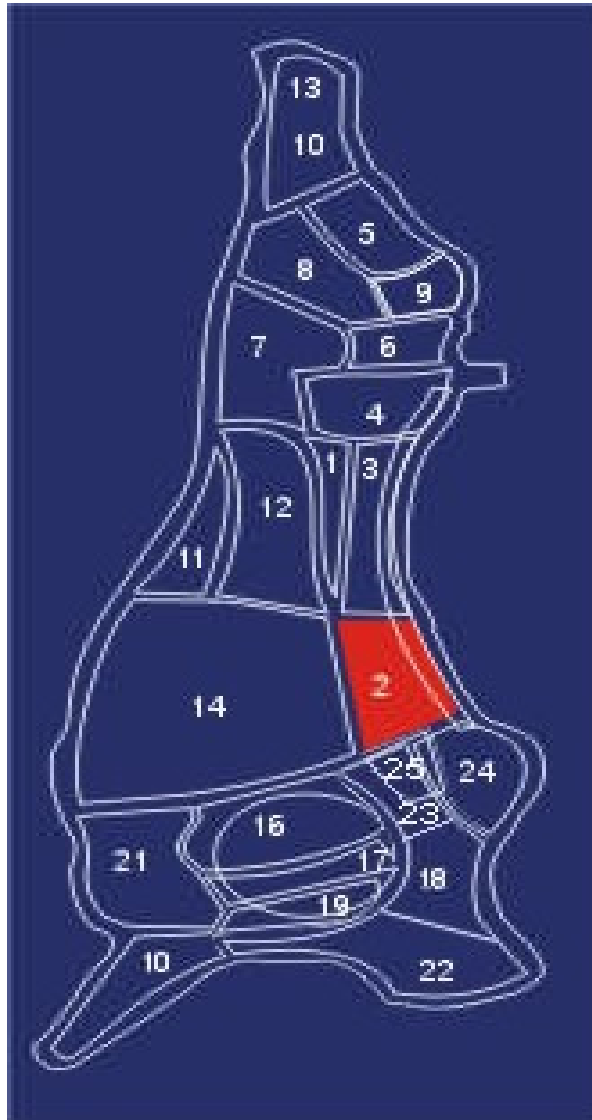


Pescuezo



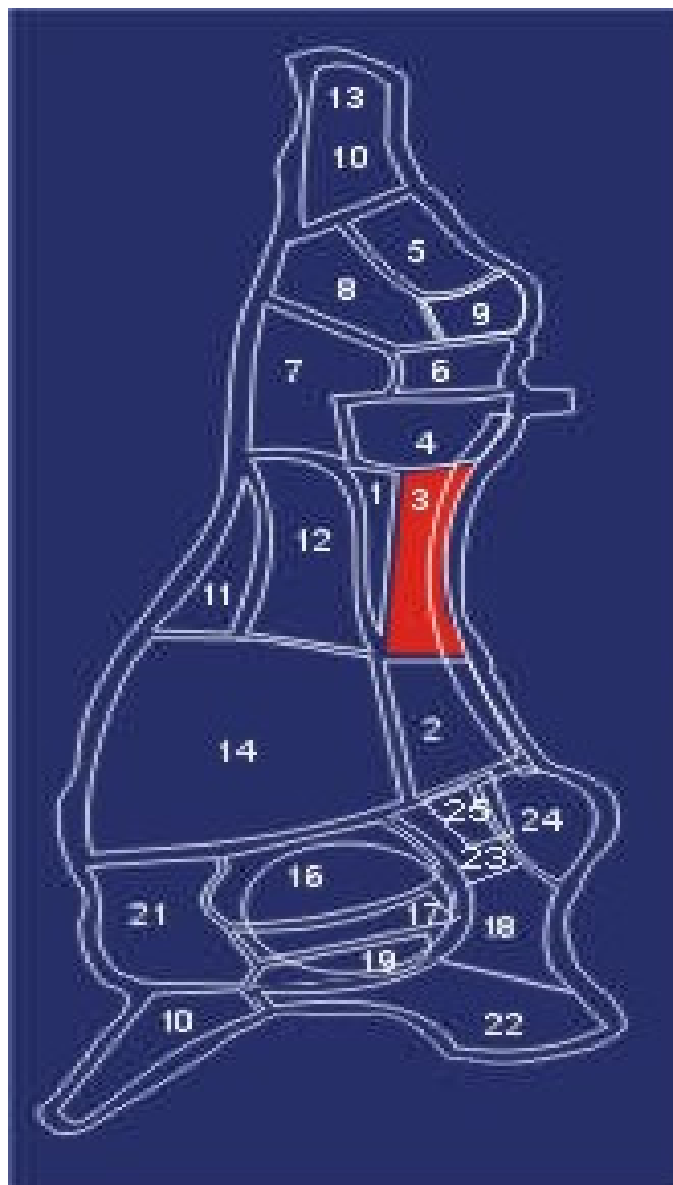


COLA DE LOMO (New York)



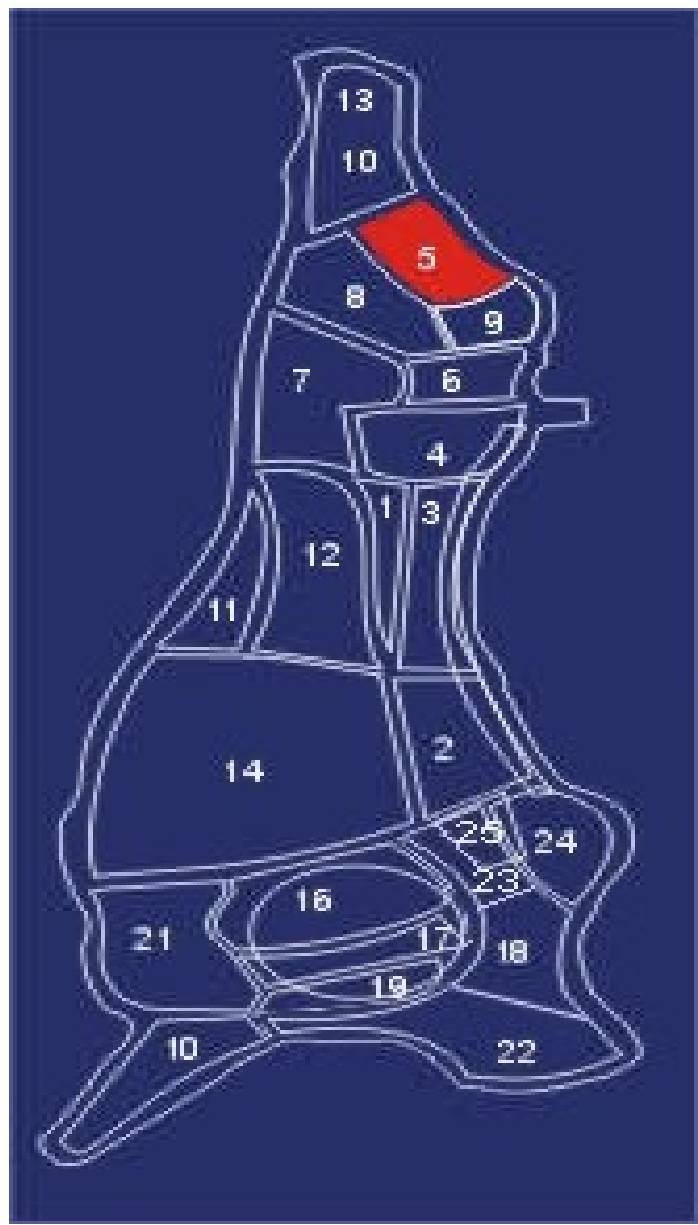


(LOMO ANCHO)



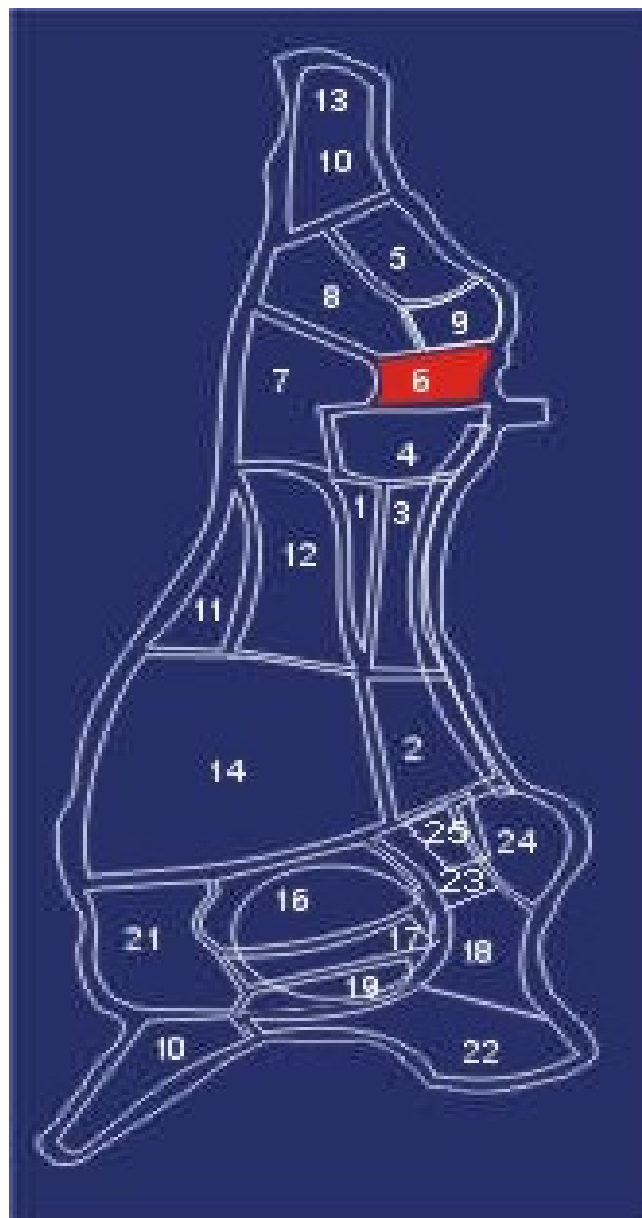


MANOPIEDRA



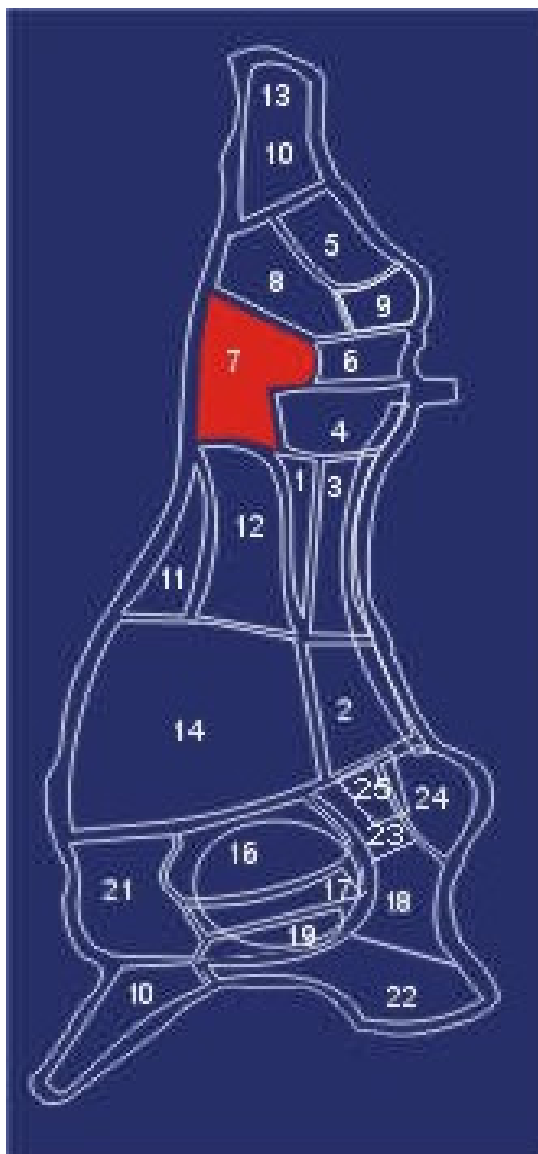


VUELTA



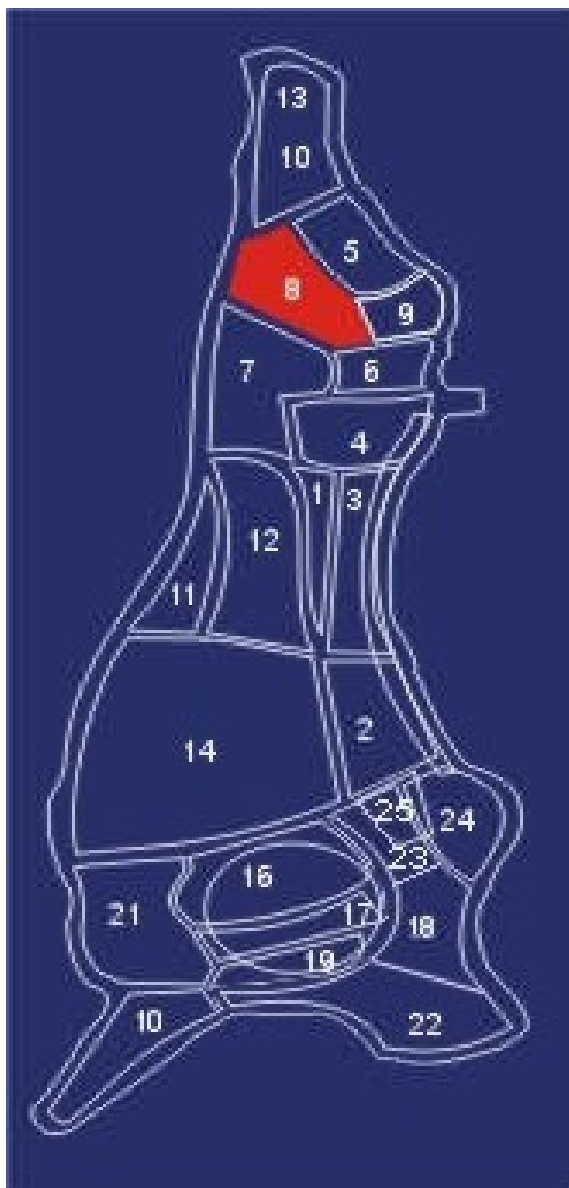


BOLITA



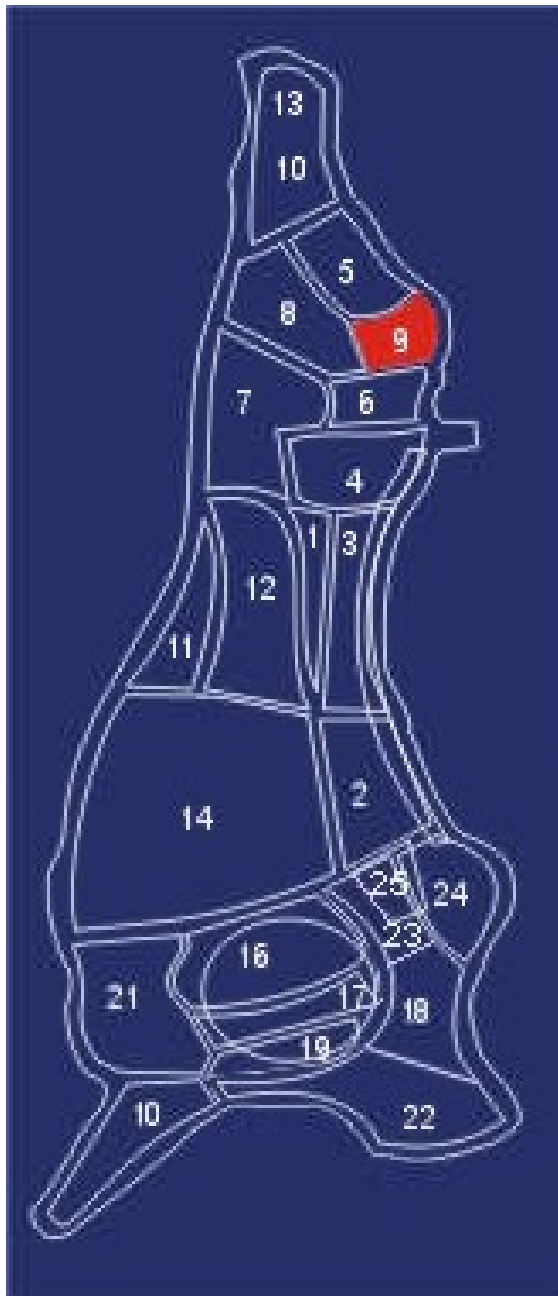


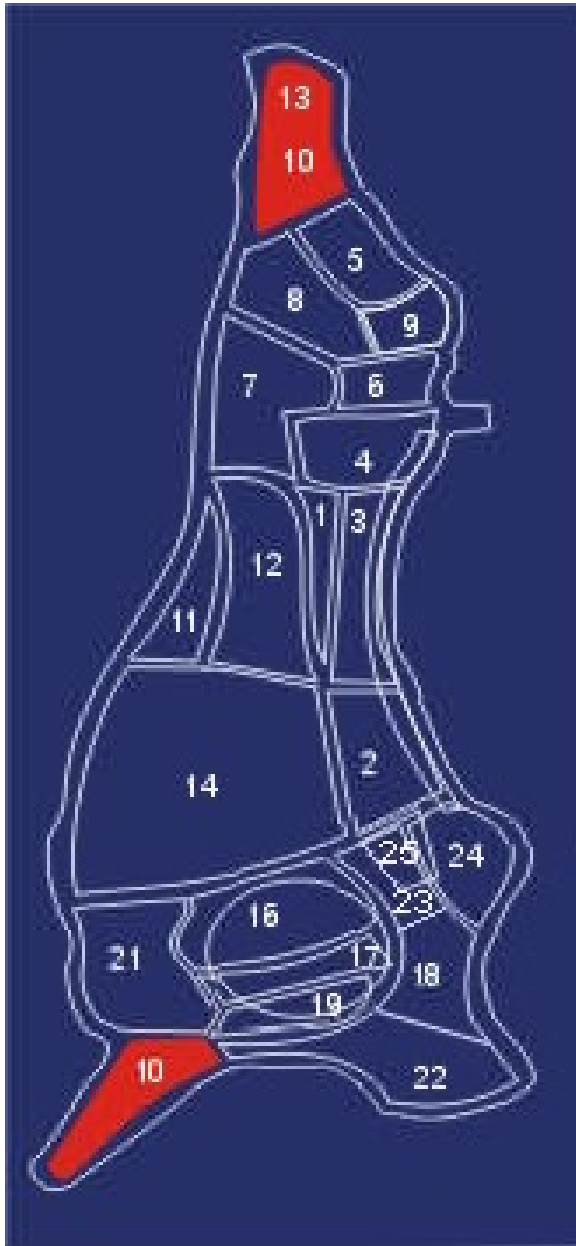
SOLOMO





PUNTA SOLOMO



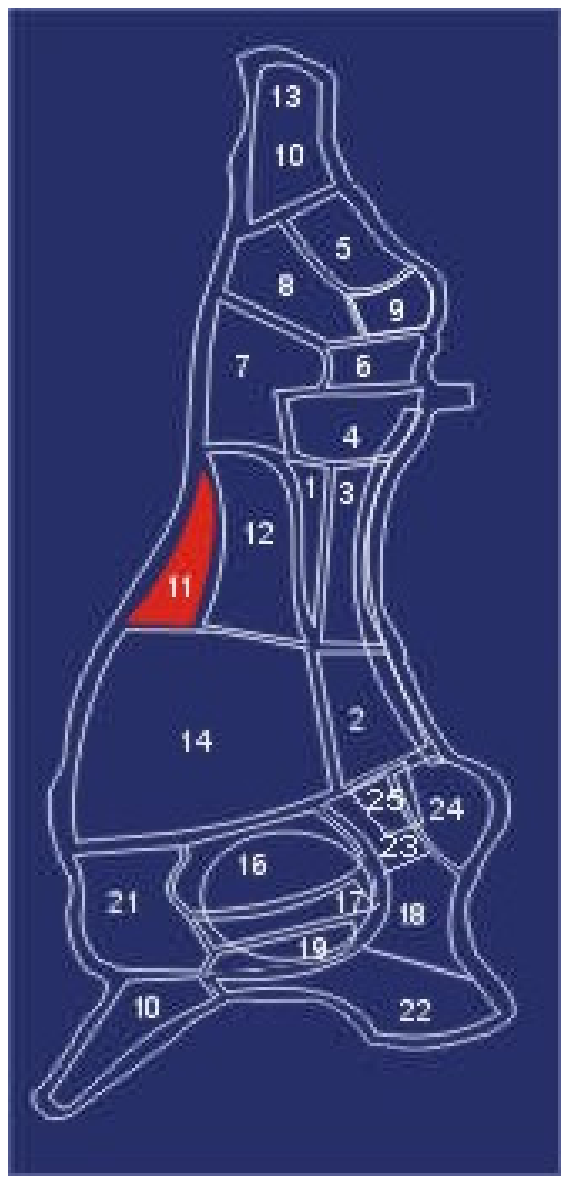


RATONES



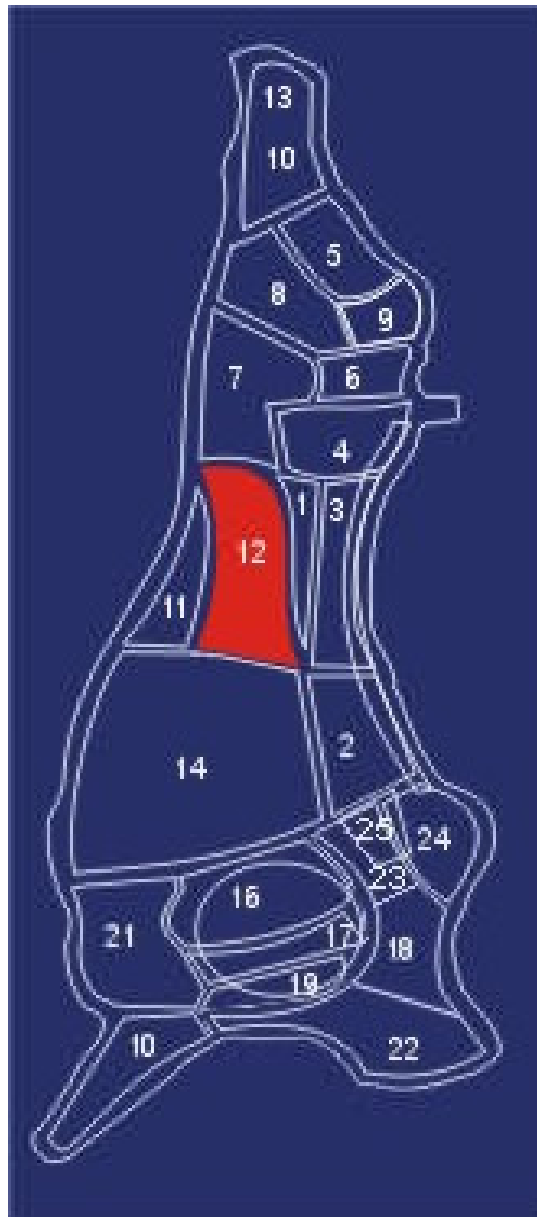


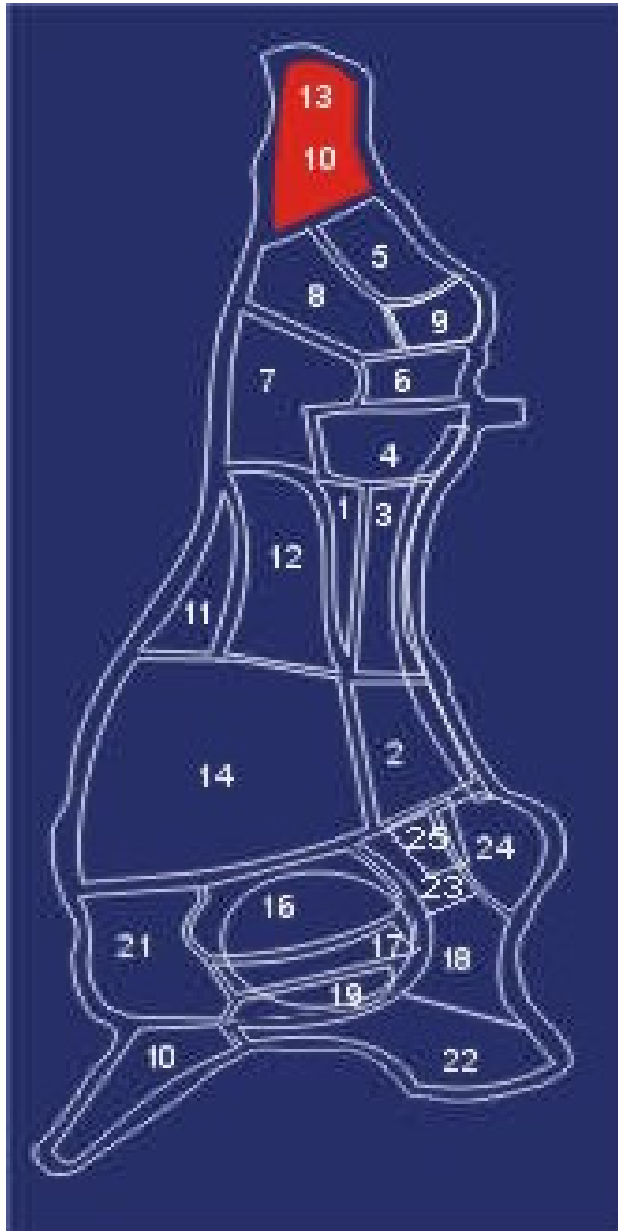
MATAMBRE





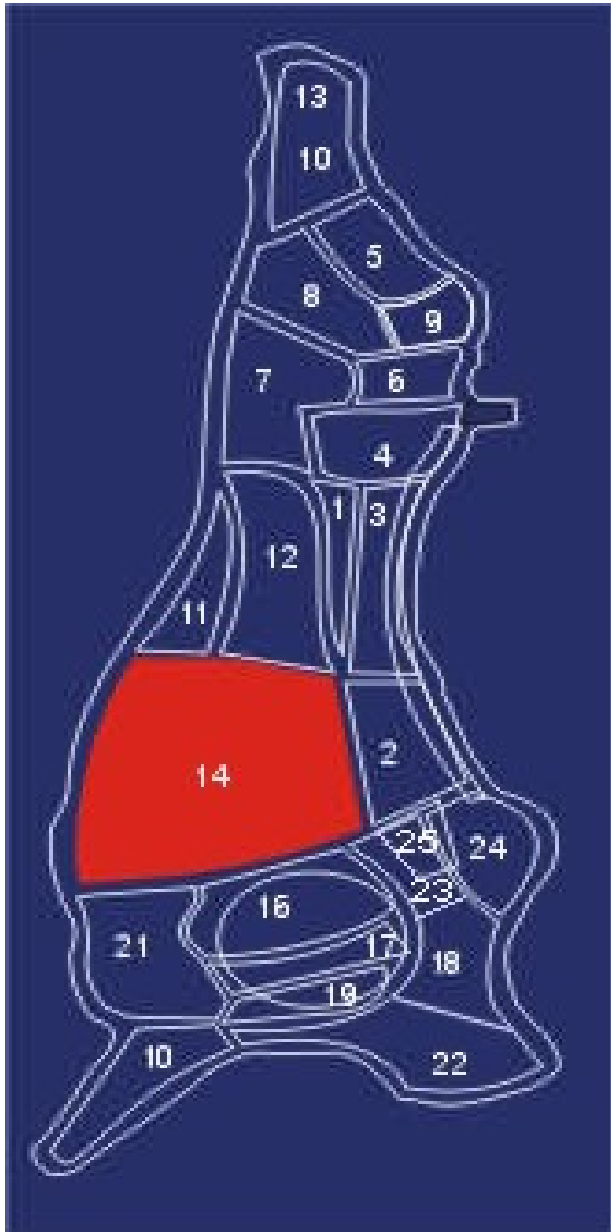
CESINA





OSOBUCCO



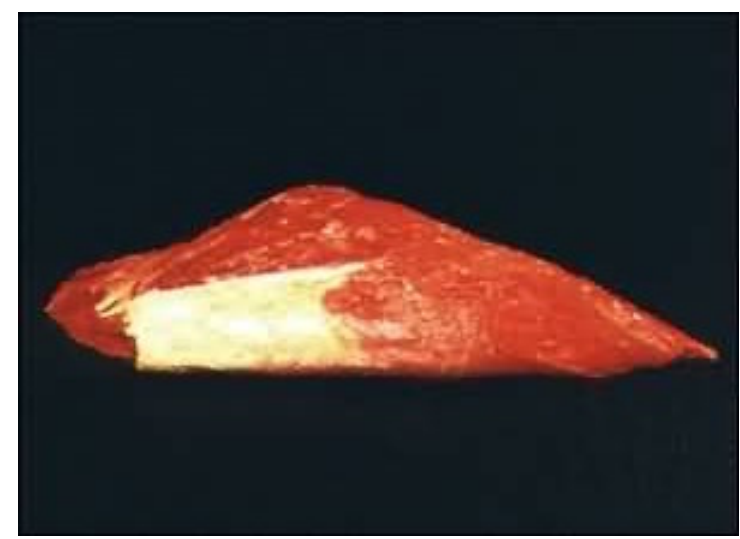
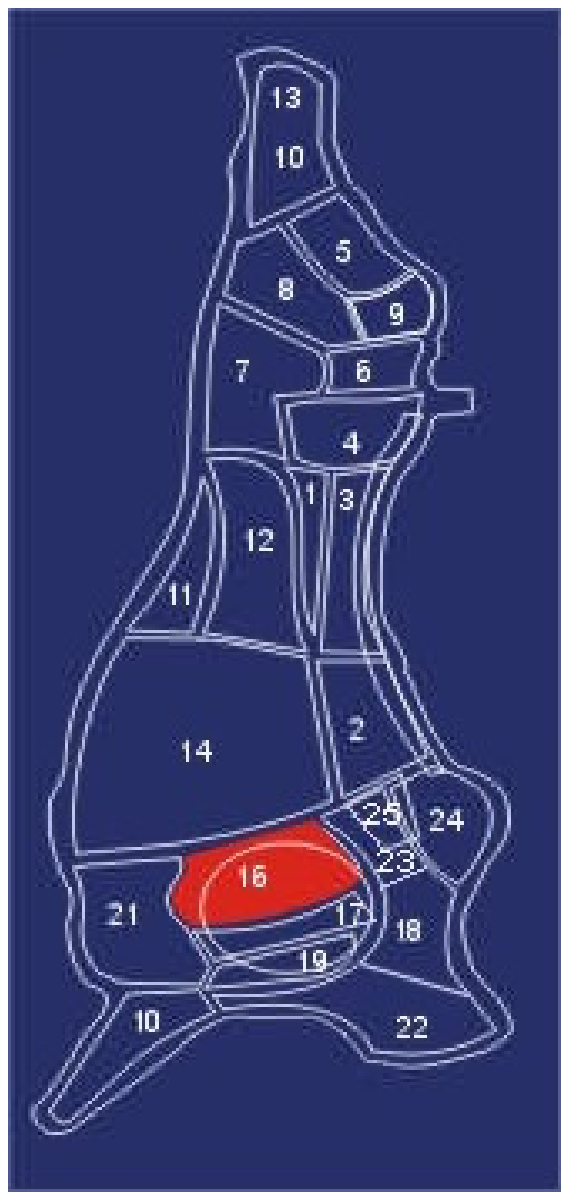


COSTILLA



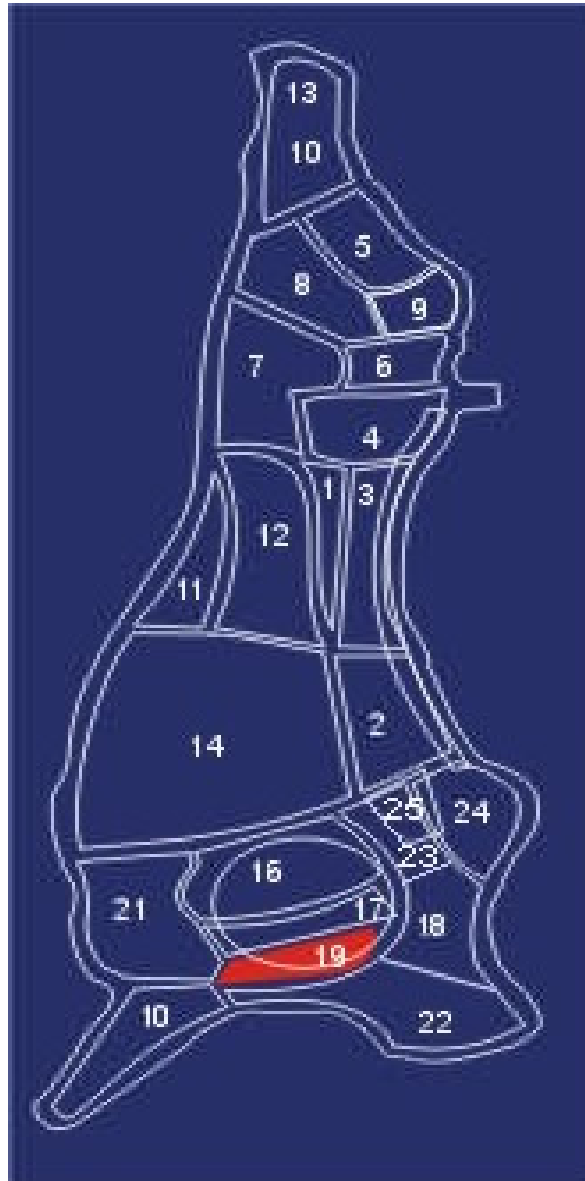


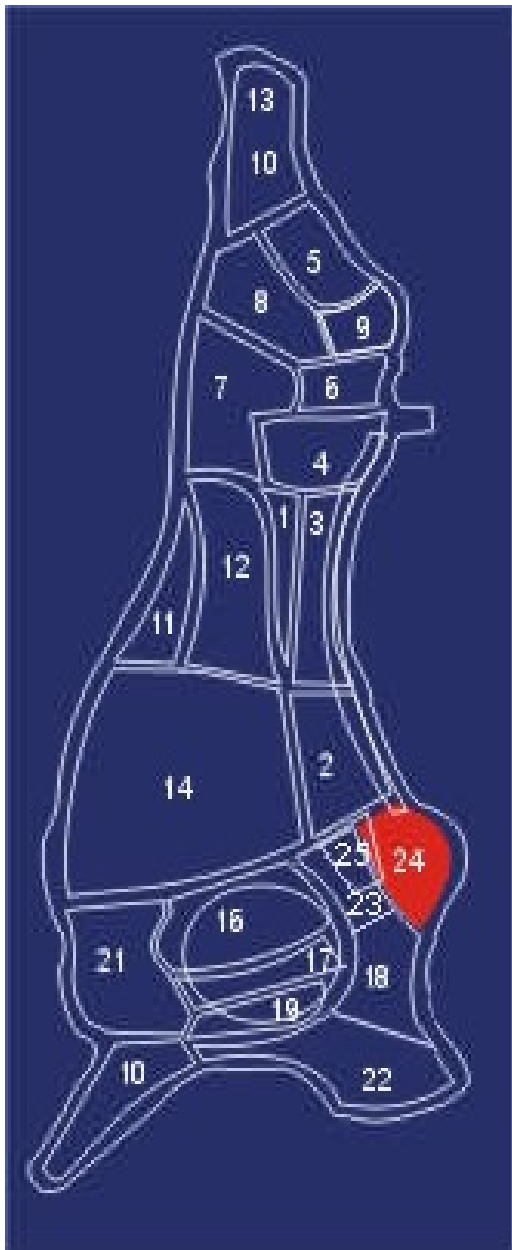
POSTA PALETA





CORAZON PALETA



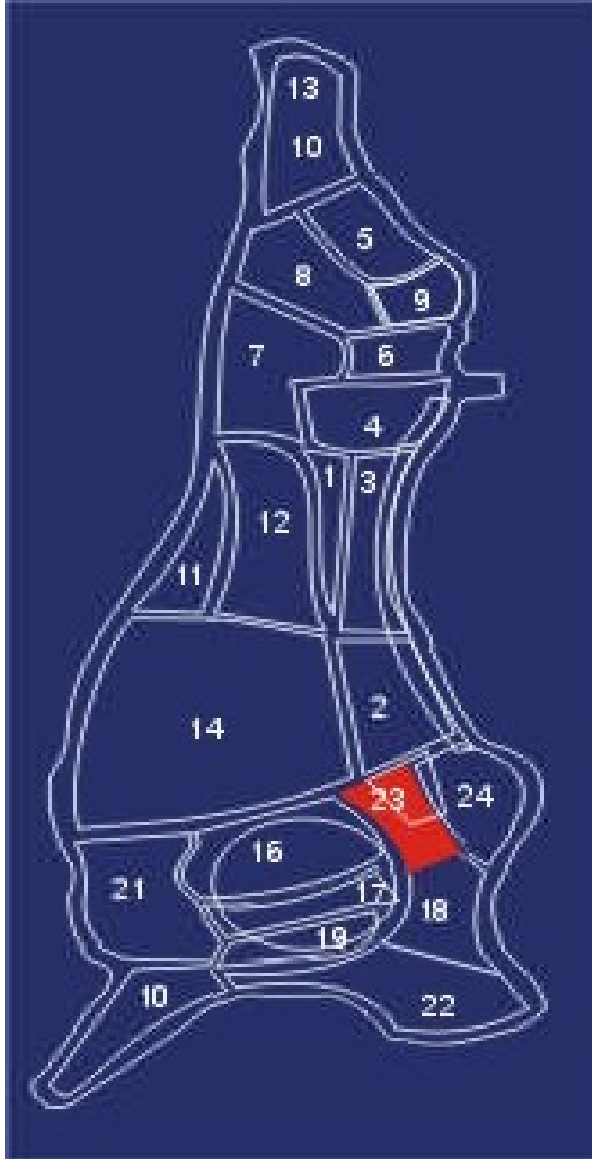


GIBA o JOROBA



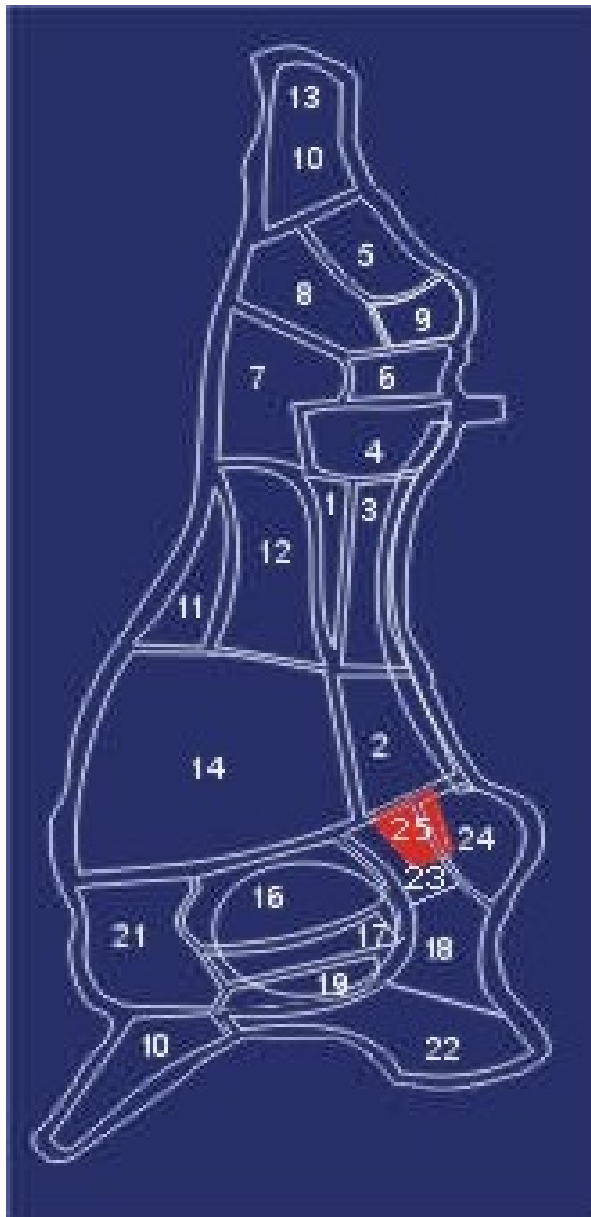


LOMOPESCUEZO

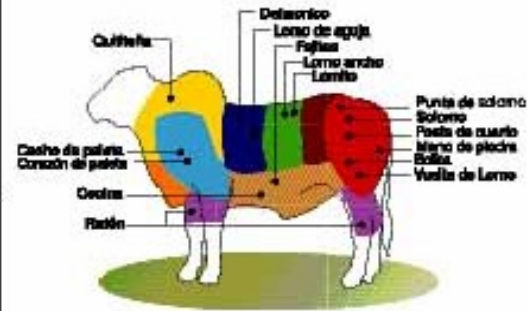




LOMIDEAGUA



Cortes nacionales más frecuentes



Noomenclatura: Muy suave
 Suave
 Menos suave



Molida



Bolita



Cacho de Paleta



Cecina



Delmónico



Corazón de paleta



Lomito



Lomo de aguja



Lomo ancho



Mano de piedra



Posta de cuarto



Cola de lomo



Quititeña



Ratón



Solomo



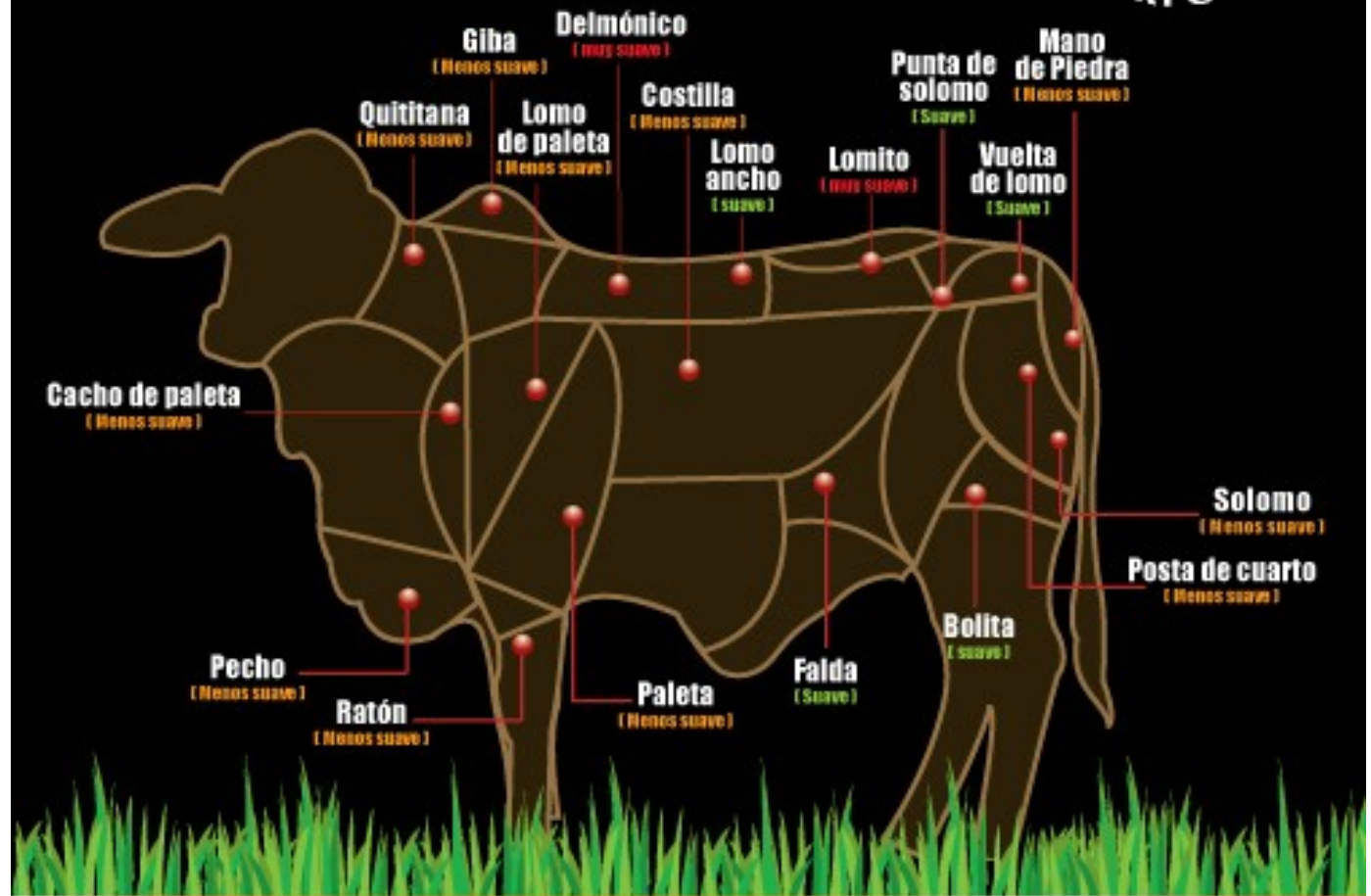
Vuelta de lomo

Nuestra carne es producida a base de pasto y contiene poca grasa y baja en colesterol

Carne... te hace bien!



Clasificación de Cortes de Carne de res



GRACIAS!

Carne como la nuestra... ninguna

<http://www.corfoga.org> Telf: 225-1011